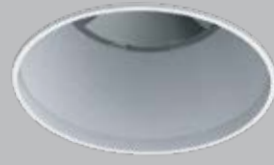


NESTAL FIXED TL



divinity lights

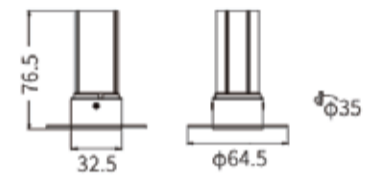
Quick Info

CRI \geq 90
3000K, 4000K, 5700K
Tunable White 2700-6500K
ON-OFF/ ON-OFF (FLICKER FREE)
DALI-2 DT6 / DALI-2 DT8/ DALI +
SDCM $<$ 3
Lens & Reflector
L70 @50,000h
Aluminium Die-cast

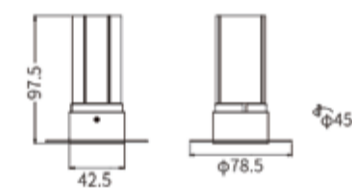
Type

Recessed

Nesta Fixed TL 35



Nesta Fixed TL 45

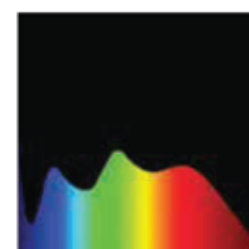


Nesta Fixed TL 55



Light Distribution

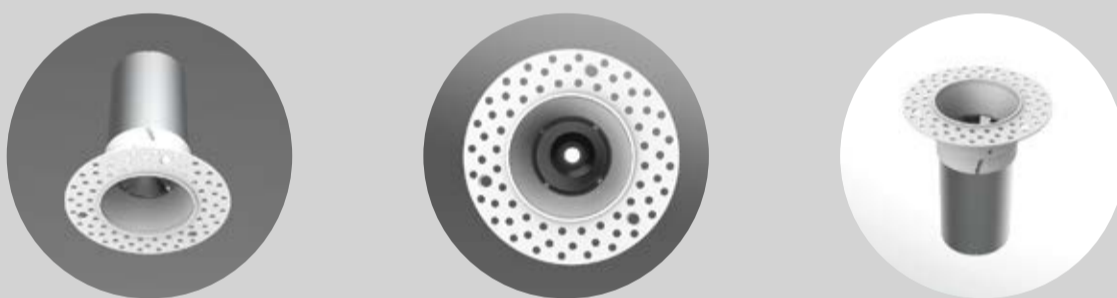
Direct



CRI \geq 90



TUNABLE WHITE



NESTA FIXED TL

NETSA FIXED TL fixture has:

- Luminaire housing of die-cast- aluminium
- Round recessed spotlight with effortless installation
- Surface powder coated
- COB (Chip on Board) technology
- Technology for maximum efficiency
- For specific areas or to accentuate a feature
- Zero multiple shadows
- LED with effective colour rendering
- Overflowing colours with soft light and shadow
- Interpretation of the real environment light and colours
- High colour rendering

NESTA FIXED TL



NESTA FIXED TL - 35

System Power	Dimension
5W	Outer Dia- 64.5mm CutoutDia- 35mm Height- 76.5mm

NESTA FIXED TL- 45

System Power	Dimension
7W	Outer Dia- 78mm CutoutDia- 45mm Height- 97.5mm

NESTA FIXED TL- 55

System Power	Dimension
10W	Outer Dia- 88.5mm CutoutDia- 55mm Height- 103mm
15W	Outer Dia- 88.5mm CutoutDia- 55mm Height- 133mm

Order Options

CCT (Colour Temperature)

3000K

4000K

5700K

Tunable White 2700K-6500K



CRI

>90

Beam Angle

15°

24°

36°

Control

ON-OFF



ON-OFF (FLICKER FREE)



DALI-2 DT6



DALI-2 DT8



DALI+



Mounting

Recessed

Material Colour

RAL As Per Request

Reflector Colour

Black

White